

A dark gray background with a white hexagonal grid pattern, resembling a honeycomb or circuit board design, covering the top left portion of the page.

# EQUIPMENT

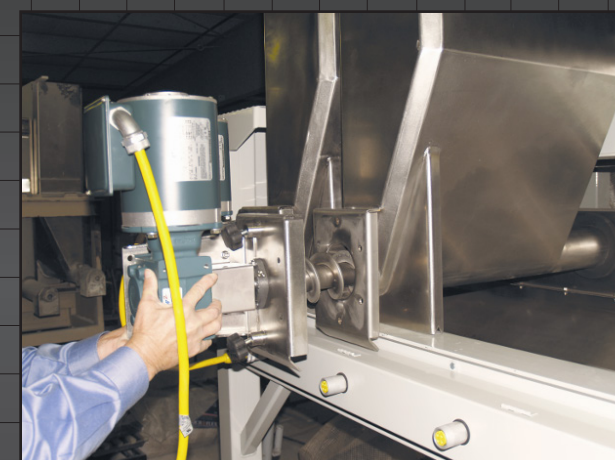
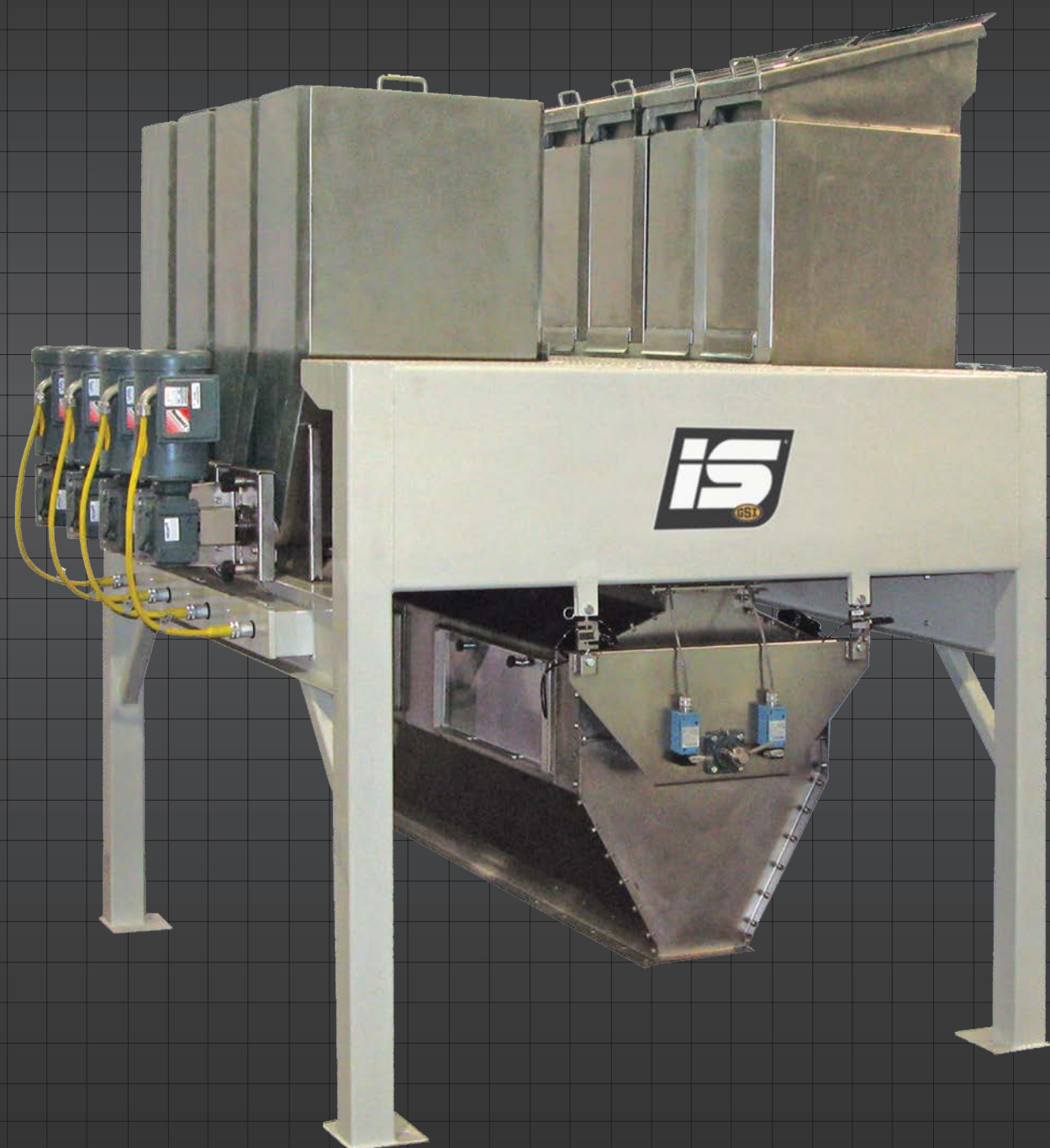
A horizontal decorative bar spanning the width of the page. It features a red line on the left, a gray arrow pointing right in the center, and a hatched pattern on the right.A solid dark gray rectangular block at the bottom of the page, serving as a background for the company logo.

*EAI*

EASY  
AUTOMATION  
INC.

# INDUSTRIAL “I” MICRO INGREDIENT SYSTEM

The industrial “I” line micro ingredient system features top-of-the-line specifications that is uniquely designed for the demands of brand-new, high-capacity feed mills expecting to run 24 hours a day for decades to come. Offered in several configurations, these systems can adapt to your existing space. Modular hopper design provides for an unlimited number of configurations and the ability to easily expand to meet the needs of your changing facility. Our micro ingredient systems can be used with any batching system.



## NEMA 4 Quick Connect Cords

Take off the gearbox without having to disassemble or unwire motor. Allows for quick access to auger and bin in the event of maintenance.



## Industrial “I” Micro Auger Types

“I” micro augers come with variable length and depth pitch flighting patterns to achieve the highest accuracy dependent on facility and ingredient. Below are the auger options.

Standard - Half Pitch to Double Full  
 High Accuracy - Full Pitch to Triple Full  
 High Volume - Half Pitch to Full  
 UHMW Auger - for food grade, sticky materials

## FEATURES & SPECIFICATIONS

- + Cosmetic Finish Stainless Steel Bins
- + 4” Standard High Performance Feeder Screw with Variable Length and Depth Pitch Flighting Patterns
- + Dodge Gearboxes
- + NEMA 4 Quick Connect Cords
- + 45 Degree Bin Corners
- + 65 Degree Bin Wall Slope
- + S Type, Class III Load Cells
- + Stainless Pneumatic Rotary Scale or Funnel
- + Stainless Funnel Discharge

## MOTOR OPTIONS

- + 1 HP TEFC Motor
- + 3/4 HP Explosion Proof Motor

## MICRO BIN SIZES

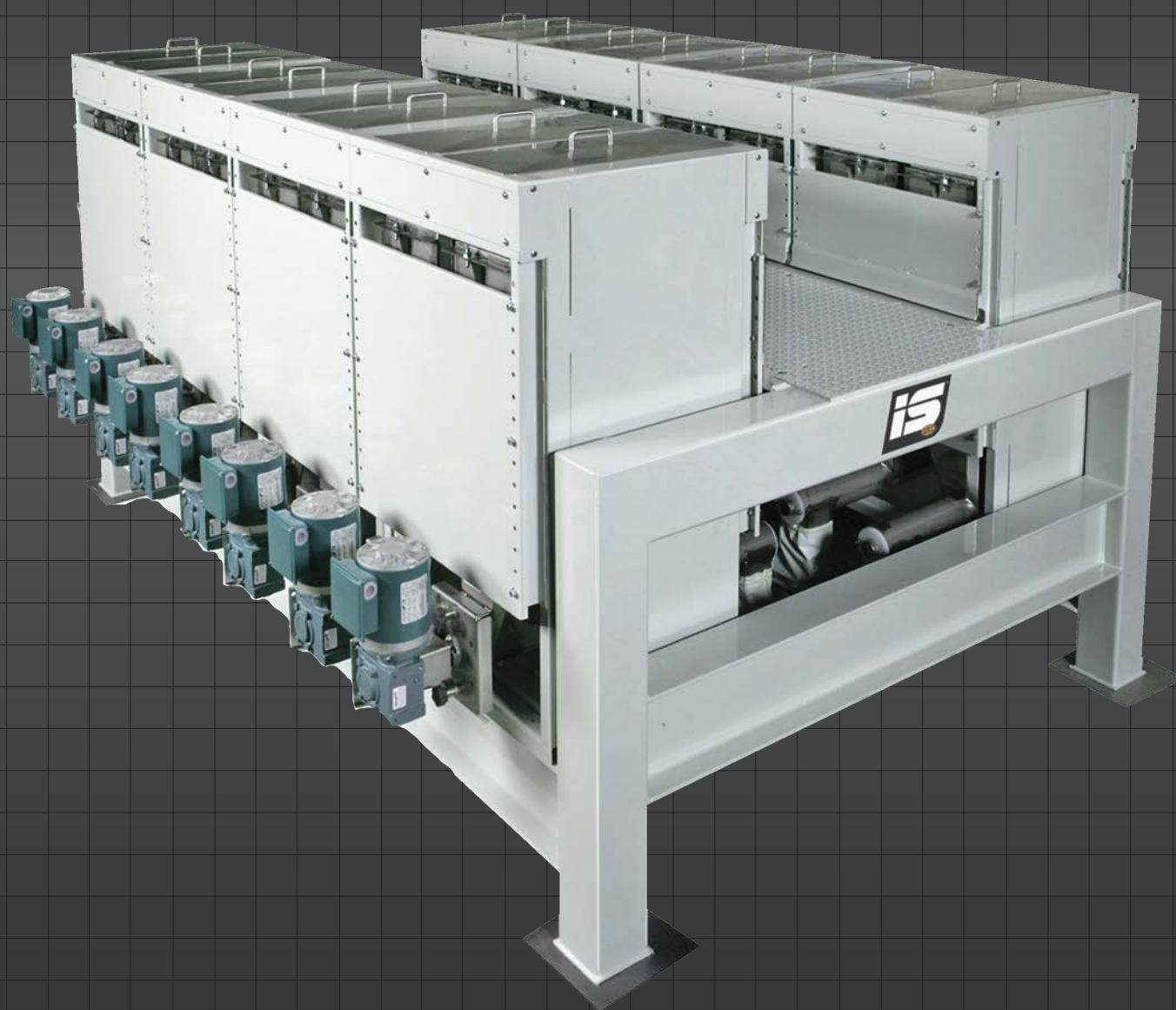
- + 5.7 cu. ft.
- + 7.5 cu. ft.
- + 9.5 cu. ft.

## OPTIONAL/ ADD ON

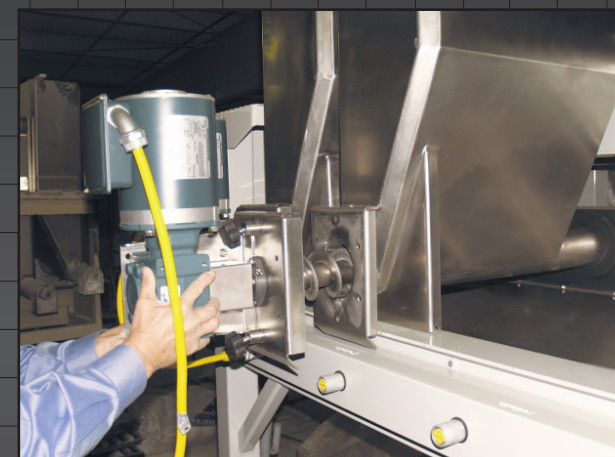
- + Platform & Stairs
- + Customized Feeder Screw Options Depending on Inclusion Rates
- + Upgraded Bin Lid Types
- + Heavy Duty Inlet Grate



# INDUSTRIAL “I” LOSS-IN-WEIGHT MICRO INGREDIENT SYSTEM



The industrial “I” line micro ingredient system features top-of-the-line specifications that is uniquely designed for the demands of brand-new, high-capacity feed mills expecting to run 24 hours a day for decades to come. The loss-in-weight industrial micro ingredient system is built for speed and accuracy. Available in multiple bin configurations, with the option of combining as many systems as needed, gives endless capacity opportunities.



## NEMA 4 Quick Connect Cords

Take off the gearbox without having to disassemble or unwire motor. Allows for quick access to auger and bin in the event of maintenance.



## Industrial “I” Micro Auger Types

“I” micro augers come with variable length and depth pitch flighting patterns to achieve the highest accuracy dependent on facility and ingredient. Below are the auger options.

Standard - Half Pitch to Double Full  
 High Accuracy - Full Pitch to Triple Full  
 High Volume - Half Pitch to Full  
 UHMW Auger - for food grade, sticky materials

## FEATURES & SPECIFICATIONS

- + Cosmetic Finish Stainless Steel Bins
- + 4” Standard High Performance Feeder Screw with Variable Length and Depth Pitch Flighting Patterns
- + Dodge Gearboxes
- + NEMA 4 Quick Connect Cords
- + High Accuracy Beam Style Load Cells
- + Stainless Hinged Lids with Dust Control
- + Bin Lid Detection Sensors
- + Enclosed System for Safety Features

## BIN CONFIGURATION

- + 2 Bin Packs, best in configurations of 8+ bins
- + 45 Degree Bin Corners
- + 65 Degree Bin Wall Slope

## MICRO BIN SIZES

- + 5.7 cu. ft.                      + 9.5 cu.ft
- + 7.5 cu. ft.

## OPTIONAL/ ADD ON

- + Platform & Stairs
- + Upgraded Lid Types
- + Customized Feeder Screw Options
- Depending on Inclusion Rates

# STANDARD “S” MICRO INGREDIENT SYSTEM

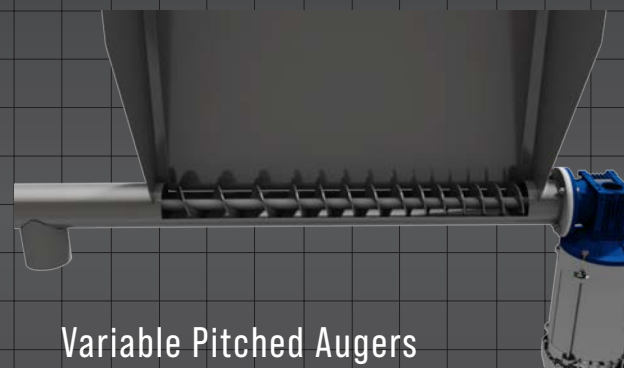
**NTEP CERTIFIED**



## Funnel Scale Option

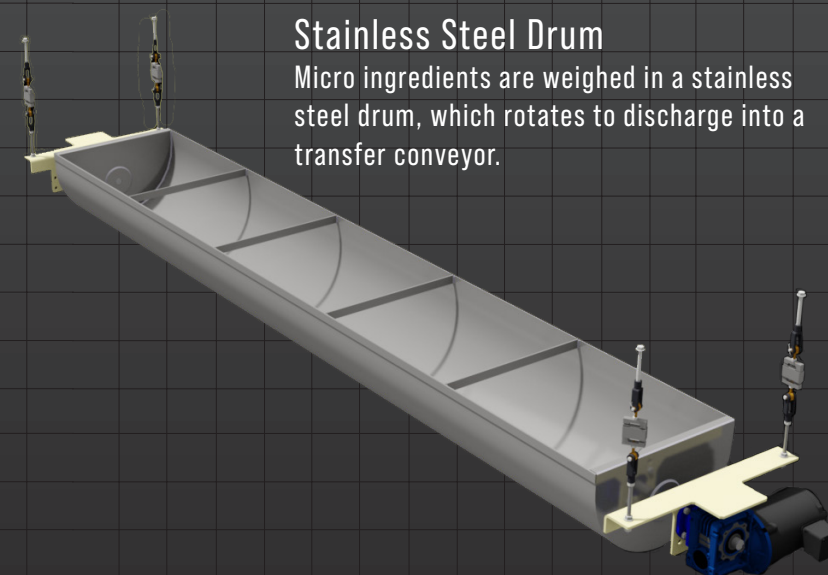
In addition to stainless steel rotary dump, the funnel scale is another discharge option on the Standard “S” micro design. Best suited for larger inclusion rates.

The standard “S” line micro ingredient system features high-quality specifications and is uniquely designed for both new construction or adding a micro ingredient system to a commercial facility. This design provides a high-quality design at a competitive price. Offered in several configurations, these systems can adapt to your existing space. Modular hopper design provides for an unlimited number of configurations and the ability to easily expand to meet the needs of your changing facility. Our micro ingredient systems can be used with any batching system.



## Variable Pitched Augers

Flighting is varied to keep bin contents level throughout the entire emptying process.



## Stainless Steel Drum

Micro ingredients are weighed in a stainless steel drum, which rotates to discharge into a transfer conveyor.

## FEATURES & SPECIFICATIONS

- + Mill Finish Stainless Steel Bins
- + Hinged Bin Lids with Handles
- + Stainless Variable Pitch Augers
- + NTEP High Accuracy Load Cells
- + Weigh Back Feature for Inventory Reconciliation

## MOTOR OPTIONS

- + 3/4 HP TEFC Motor with Gearbox
- + 3/4 HP Explosion Proof Motor

## MICRO BIN SIZES

- + 4.5 cu. ft.
- + 9.0 cu. ft.
- + 18.0 cu. ft.

## OPTIONAL/ ADD ON

- + Platform & Stairs
- + NTEP Approved Load Cells for individual bins are available for inventory purposes. EAI micro systems can be NTEP certified within 0.05 lb.
- + 2.8 cu. ft or 5.6 cu. ft bin sizes



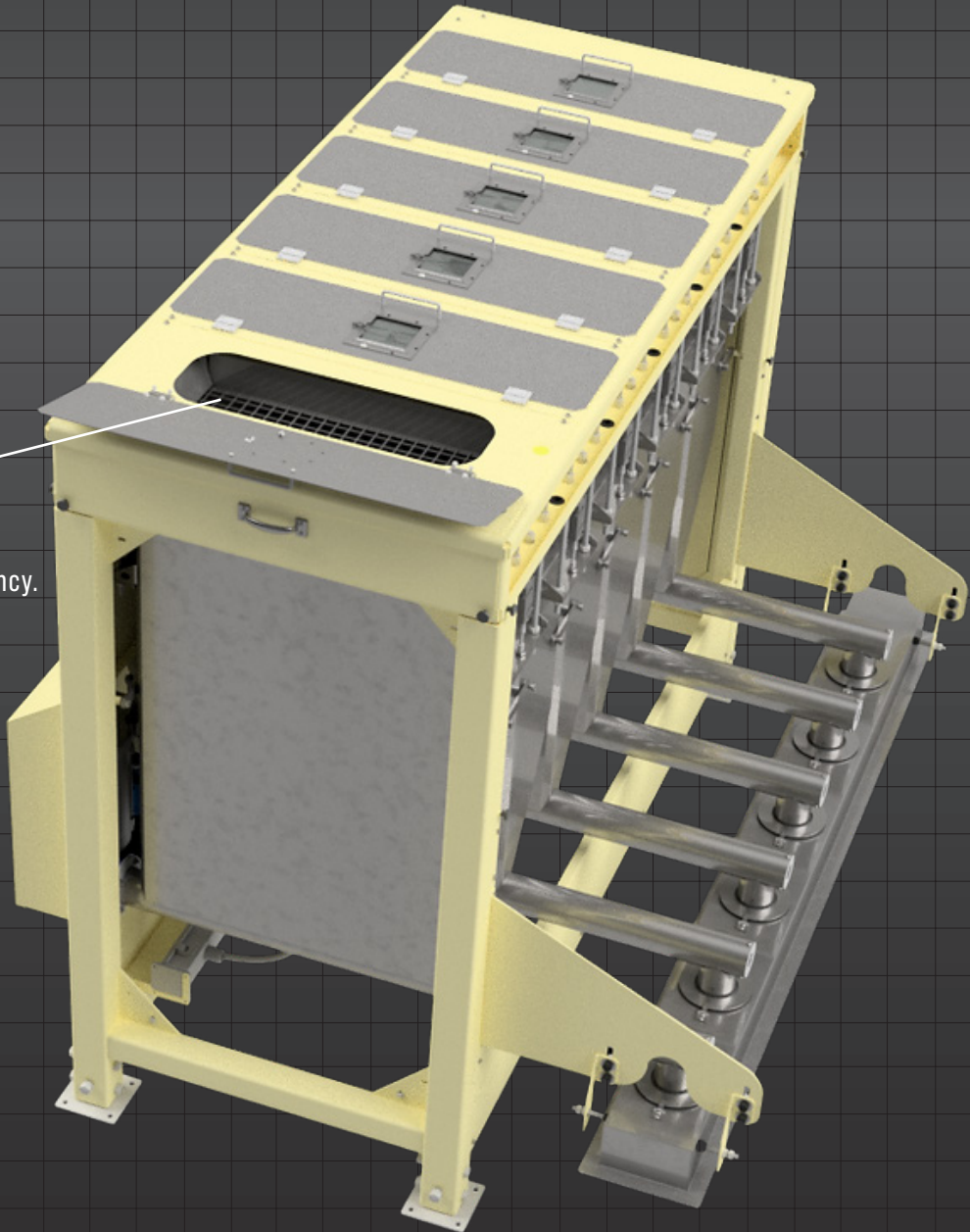
# STANDARD “S” LOSS-IN-WEIGHT MICRO INGREDIENT SYSTEM



## Lid Closed Sensor

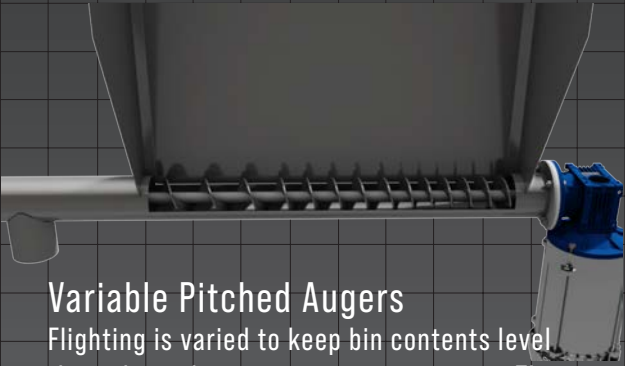
Sensor to verify cover is closed so product isn't being loaded while in use.

**Bin Screens**  
Increase consistent ingredient consistency.



**Adjustable Leg Height**  
Customize to fit into your facility.

The standard “S” line micro ingredient system features high-quality specifications and is uniquely designed for both new construction or adding a micro ingredient system to a commercial facility. Our loss-in-weight industrial micro ingredient system is built for speed and accuracy. Available in multiple bin configurations, with the option of combining as many systems as needed, gives endless capacity opportunities. All of the bins can be operated and used simultaneously. This system allows for real-time inventory levels in every bin for record keeping purposes. For contamination purposes, this system can be mounted directly above the mixer.



## Variable Pitched Augers

Flighting is varied to keep bin contents level throughout the entire emptying process. These augers are smaller in size which offers a higher degree of accuracy when dispensing expensive ingredients.



## Hanging S Load Cells

Allow for extreme accuracy and reliability

## FEATURES & SPECIFICATIONS

- + Mill Finished Stainless Steel Bins
- + Variable Pitch Precision Augers
- + High Accuracy Hanging S Shape Load Cells
- + Lid Closed Sensors
- + Bin Screens for Ingredient Consistency
- + Enclosed System for Safety Features

### BIN CONFIGURATION

- + 2, 4, or 6 bin customizable configuration

### MICRO BIN SIZES

- + 1 cu. ft.
- + 4 cu. ft.

### OPTIONAL/ ADD ON

- + Platform & Stairs
- + Customizable Bin Sizes Available
- + Direct to Mixer Discharge Package

# MAIN SCALE WEIGH HOPPER

Our main scale weigh hopper is available in mild or stainless steel construction. While having many customizable options such as discharge gate configurations, capacities, venting options, and more. The main scale weigh hopper can be configured to fit your individual needs.

## FEATURES & SPECIFICATIONS

- + S Style NTEP Load Cells
- + Discharge Gates
- + Venting Options
- + Customizable for Facility Layout

### SIZE OPTIONS

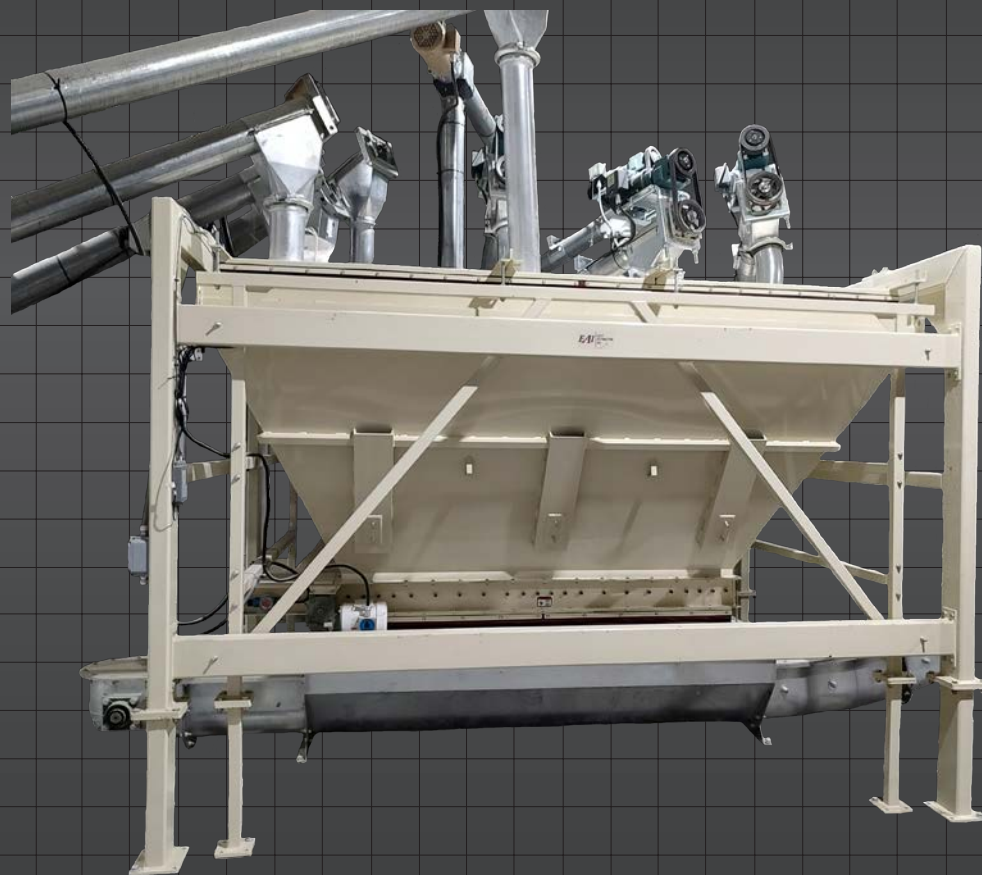
- + 1-ton to 6-ton
- + 100 cu. ft. to 300 cu. ft.

### OPTIONAL / ADD ON

- + Mounted Vibrator

### DISCHARGE GATES

- + Pneumatic or Electric
- + Gate Size Customizable



### Variety of Layout Options

Main scale weigh hopper can be set above a drag conveyor (shown above) or hung above mixer depending on specific need and function.

# TOTE SCALE WEIGH HOPPER

The tote scale weigh hopper design speeds up systems by adding additional scales to weigh bulk bag or other ingredients. This allows for precise weighing of inclusions that are too high for a micro ingredient system.

## FEATURES & SPECIFICATIONS

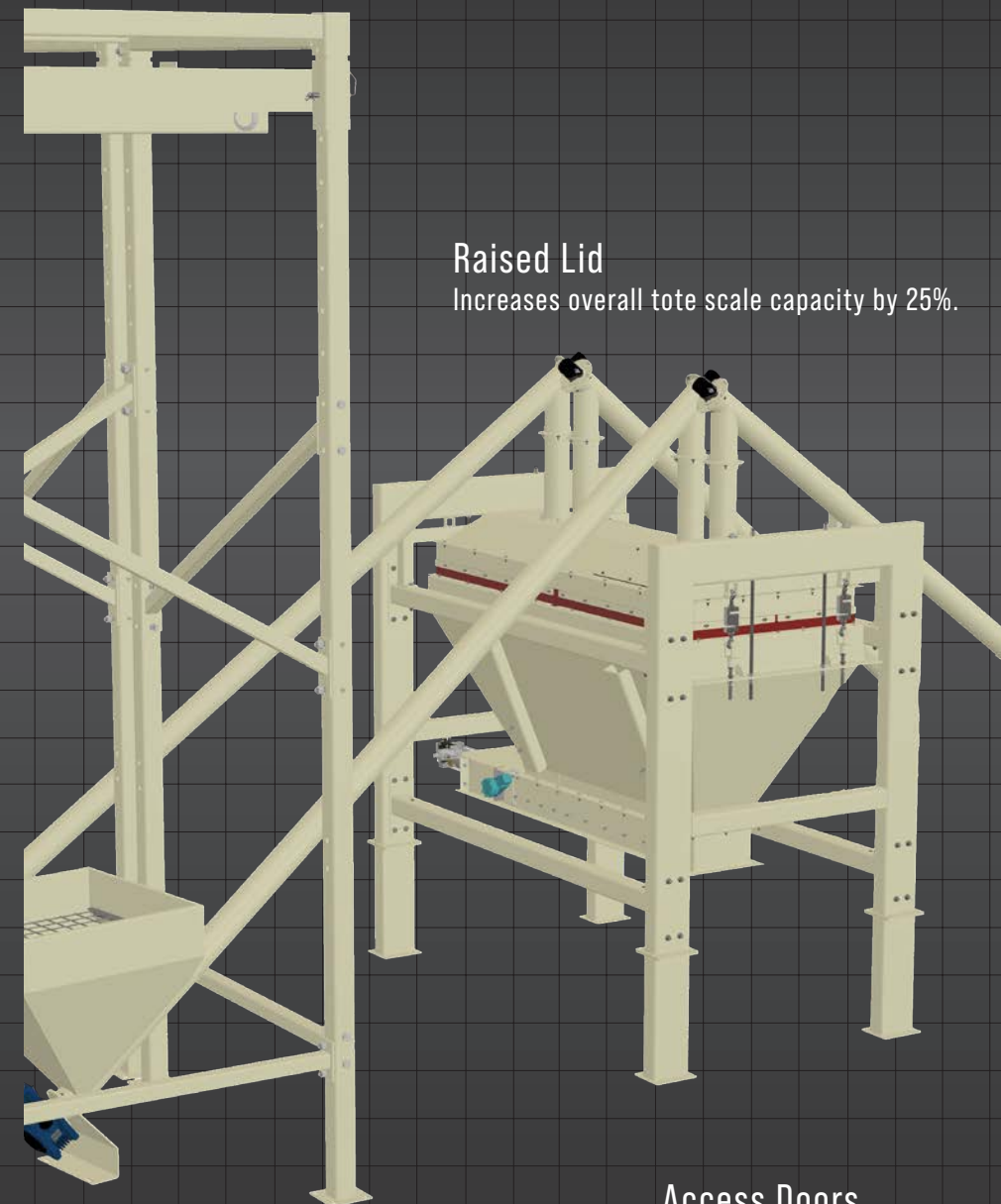
- + S Style NTEP Load Cells
- + Heavy Duty Frame
- + Pneumatic or Electric Discharge Gates
- + Raised Lid
- + Hopper Access Doors

### SIZE OPTIONS

- + 1, 2, 3 or 4 Tote Design Configuration
- + 6 cu. ft. to 100 cu. ft.
- + 270 lbs. to 4,500 lbs.

### OPTIONAL / ADD ON

- + Flush Hopper
- + Stainless Steel Upgrade



### Raised Lid

Increases overall tote scale capacity by 25%.

### Access Doors

Hopper access doors provide enhanced cleaning and maintenance capabilities. Standard on EAI tote scale weigh hoppers.



# BULK BAG & TOTE UNLOADING SYSTEM

## Available with the Following Options:

- + Scale Platform with Hopper and Belt Conveyor
- + EAI Manual or Automated Controls
- + Unload Augers are Available

Our bulk bag system is economical and simple, while its rugged construction provides years of hassle-free service. With a variety of styles and configurations, we have the only totally integrated solution for your facility.

## FEATURES & SPECIFICATIONS

- + Adapted for a Variety of Discharge Conveyors
- + Adjustable Bag Hanger Heights
- + Versatile Design for Variety of Applications
- + Two (2) or Three (3) Piece Design
- + Operated by Existing Feed Mill Controls [Automated or Manual]
- + Forklift or Cantilever Design

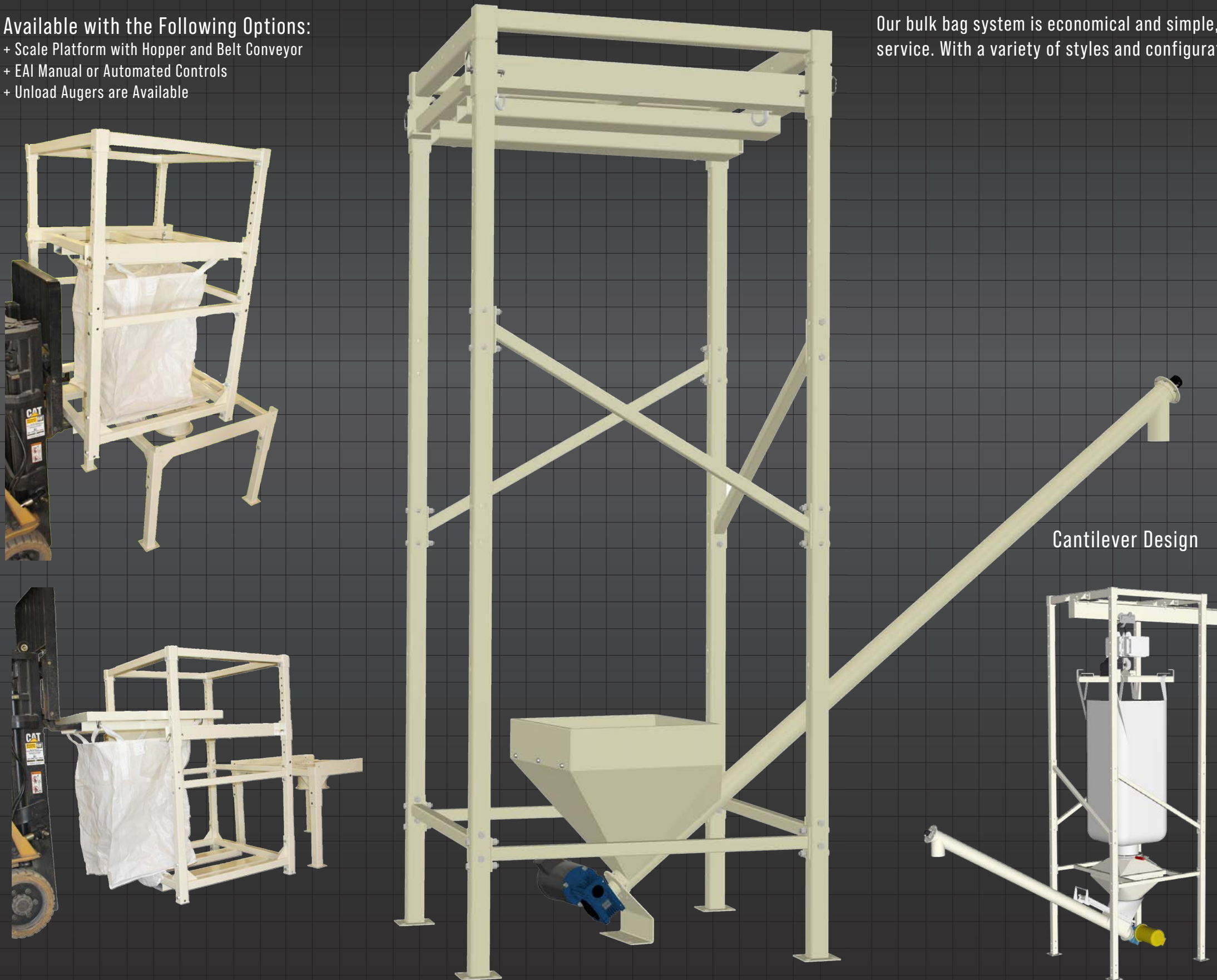
## STANDARD DIMENSIONS

- + 12' x 4'8" x 4'8"
- + Customizable to Facility Dimensions

## OPTIONAL / ADD ON

- + Hopper or Auger Agitator
- + Bag Conditioner
- + Dust Cover with Iris Valve
- + Load Cell Package

BULK BAG



# EZ-BEAM TOTE STRUCTURE

The EZ-Beam tote structure allows for similar benefits as the standard bulk bag racks, but can help minimize the amount of space needed for a forklift. The forklift can drive parallel alongside of the structure, place the tote under the overhanging trolley, and then the tote is raised and slid into position. The tote structure is offered in several configurations, and comes with a variety of unload auger options to fit into your new or existing system.

## FEATURES & SPECIFICATIONS

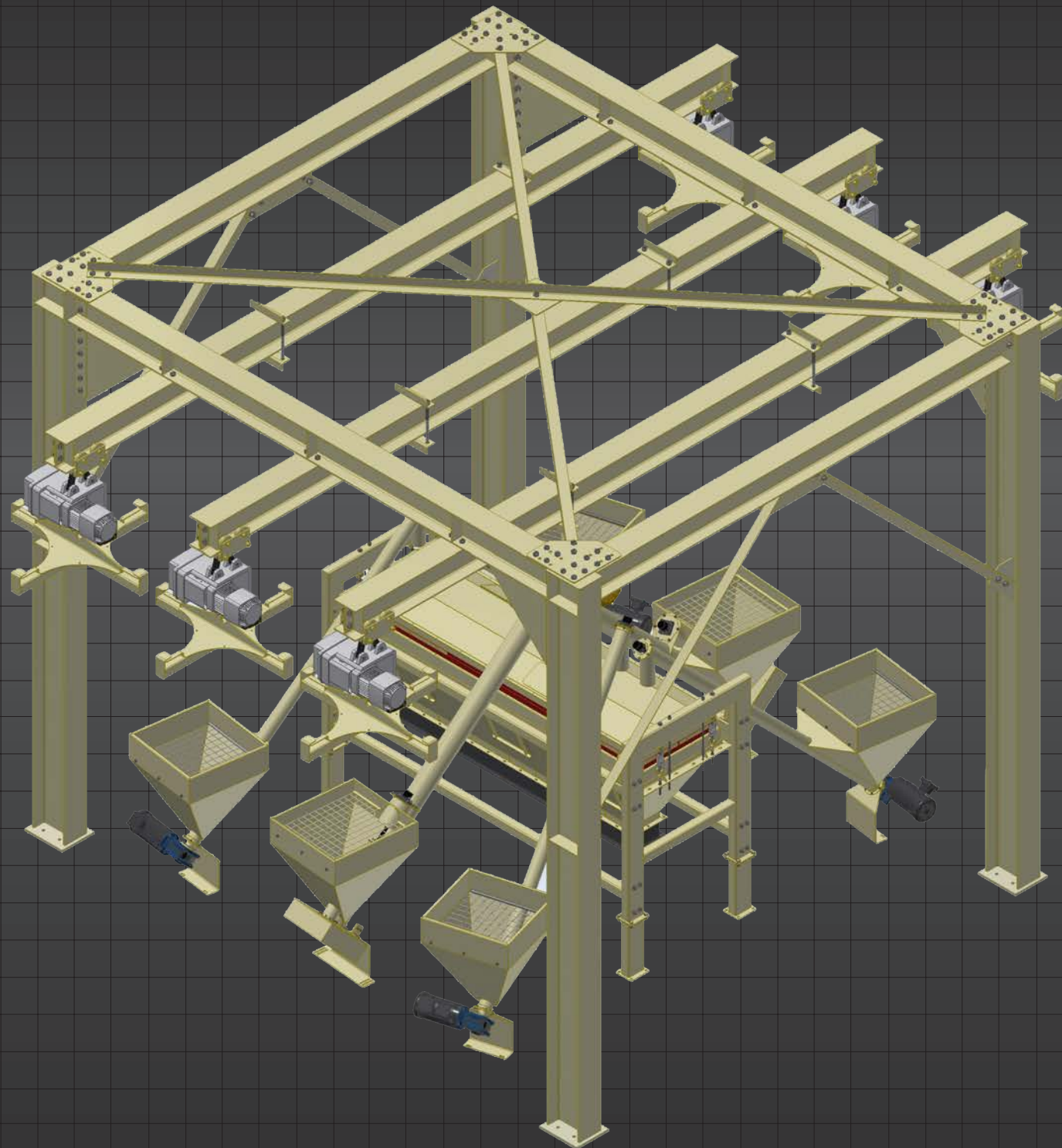
- + Easy Bag Replacement
- + Manual or Electric Winches
- + Pre-Cut, Drilled, and Painted for Installation
- + 4, 6, or 8 Rack Customizable Configurations

### Easy Bag Replacement

System allows for bag replacement at ground level without the use of a forklift. This provides flexibility in situations where height and width of building does not allow for forklift navigation.

### Customizable Configurations

Several different configurations allowing for 4-8 tote bags to be hung.



BULK BAG



# CUSTOM BUILT AUGERS

## Gear Box Driven Augers

Eliminates the troublesome belts that will often burn off and create downtime in your mill.

## Heavy Duty & Reduced Pitch

Optional Voltages and Horsepowers

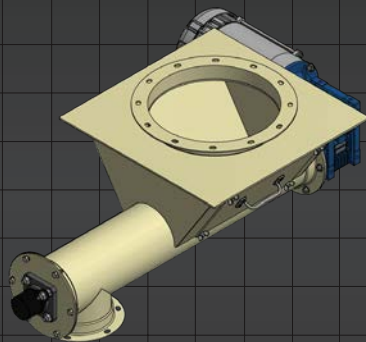


Our augers are durable, efficient, and effective. We manufacture both finishing augers and ingredient augers. Augers are made custom to fit your facility's individual needs. Customizable options include length, diameter, type, and more.



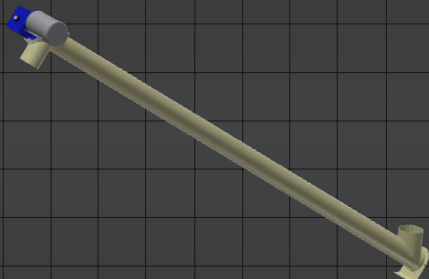
### Bulk Bag Auger

- + Auger Capacity: up to 700 bu/hr
- + Available in 4" or 6" diameters
- + Flex Auger Option
- + 2/3 Pitch Flighting at Inlet to Improve Material Flow



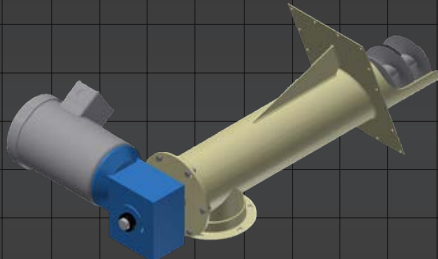
### Ingredient Auger

- + Auger Capacity: up to 1,750 bu/hr
- + Available in 4", 6", or 8" diameters
- + U-Trough Available for Maintenance
- + Variety of Inlet and Discharge Options



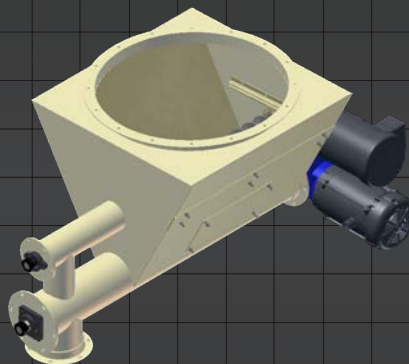
### Transfer Auger

- + Auger Capacity: up to 1,750 bu/hr
- + Available in 6" or 8" diameters
- + U-Trough and Tube Styles
- + Variety of Inlet and Discharge Options



### Finishing Auger

- + Bolt to Existing Ingredient Bin
- + Mounting Flange Fits Any Bin
- + Auger Capacity: up to 700 bu/hr
- + Available in 6" diameter



### Double Auger

- + Standard 24" Flange Ring for Mounting on Existing Bin
- + 6" or 8" Primary Auger for Speed
- + 4" Secondary Auger for Precision



### Variable Pitch Auger

- + Pitch of Flighting Varies from 1/2 Pitch to Full Pitch Alongside the Length of the Inlet to Provide Uniform Withdrawl of Material

# LOADOUT HOPPERS

Our loadout hoppers are practical and customizable. Alongside our loadout control system, this design is a seamless solution to loadout inefficiencies. Options include capacity, bin design, bin spacing, and more.

## FEATURES & SPECIFICATIONS

- + High & Low Level Indicators
- + Independent Air Gates
- + Independent Framework
- + Optional Lid Configuration

Entire design is easily modified in the future to be filled automatically by a distributor, shuttle conveyor or weigh lorry.



**Level Sensors**  
High and low level indicators  
on each of the bins.

**Independent Air Gates**  
Air gates on each individual bin.


**Customizable Bin Spacing**  
Spacing in between bins is customizable  
to fit to your facility truck sizes.

**Independent Framework**  
Load cells can be added for pre-  
weighing loads.



Loadout Hoppers On-Site





**WHERE MATCHLESS SERVICE  
MEETS PRACTICAL ENGINEERING  
FOR EXCEPTIONAL SOLUTIONS**

